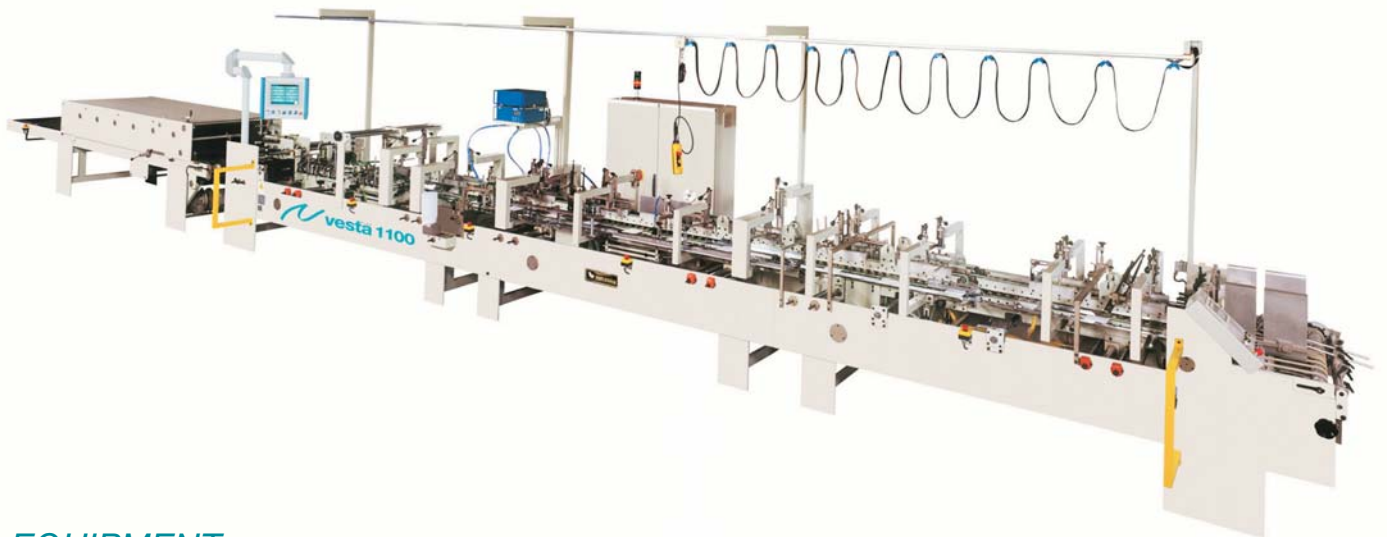


Vesta 1100 plus

folder-gluer



EQUIPMENT

MATERIALS

- Carton and board up to 600 gr/m²
- E-, F- and N-flute and B corrugatedboard
- Max. thickness of a folded box 15 mm

BLANK SIZES (standard boxes)

- Max. width 1.100 mm
- Min. width (standard machine) 126 mm
- Min. width (with small box attachment) 66 mm
- Max. length 900 mm

PRESS SECTION

- Pressure length of aprons 3.000 mm
- Aprons width 680 mm
- Max. thickness between aprons 190 mm

DRIVE

- Inching speed 25 m/min
- Variable running speed up to 400 m/min
- Press section speed up to 0-50 m/min
- Total power required 40 kW
- Net weight, approx. 7.500 Kg
- Floor space required
 (with side register module and Vestafold) 2,2 x 16,3 m

We reserve the right to modify specification

STANDARD EQUIPMENT

- Motorized feeder with independent, adjustable belts, AC speed variator and electronic pile vibrator.
- AC motors with assisted ventilation. They do not require maintenance.
- Extended prebreaking section for 1st and 3rd creases.
- Lower gluing (disc) unit in stainless steel.
- Upper carriers with "shock-absorber system".
- Folding and closing section of 2nd and 4th creases.
- Reducer gear box drive along the full machine length.
- Digital carrier position indicators.
- Adjustable crease pressing rollers.
- Transfer section with two upper and two lower adjustable telescopic ejector arms.
- 2 touch screen counters at feeder and delivery. Language selection. Controlling production, speed and spacing between cartons.
- Pneumatic kicker (air compressor required).
- Sliding overhead control unit.
- Motorized press with adjustable pressure and spacing control.

Vesta 1100 plus

folder-gluer

SOME OPTIONS

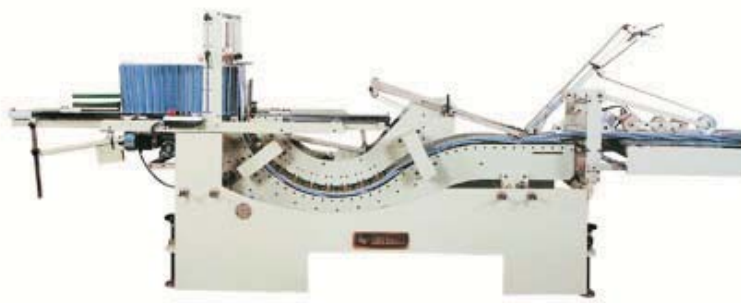
- Untimed suction feeder.
- Side register module.
- Crashlock bottom type "A" and double wall unit.
- Attachment for crashlock bottom boxes type "B".
- 3rd centre removable carrier on folding & closing section.
- **Vestafold** electronic 4-corner folding module with servo motors controlled by microprocessor.
- 6-corner accessories.
- Motorized transfer section.
- Electronic glue systems for cold glue or hotmelt.
- Glue inspection and verification system.
- Pocket folder attachment.
- Small box attachment.
- Glue flap milling device (grinder) with dust extractor.
- Bar code readers with stopping relay or carton ejector.
- Attachment for standard boxes with inner partitions.
- Pneumatic press.
- **Vestapack** carton collector module.



Suction feeder (option)



Side register module (option)



Vestapack carton collector (option)



Pneumatic press (option)



Vestafold 4-corner folding module (option)

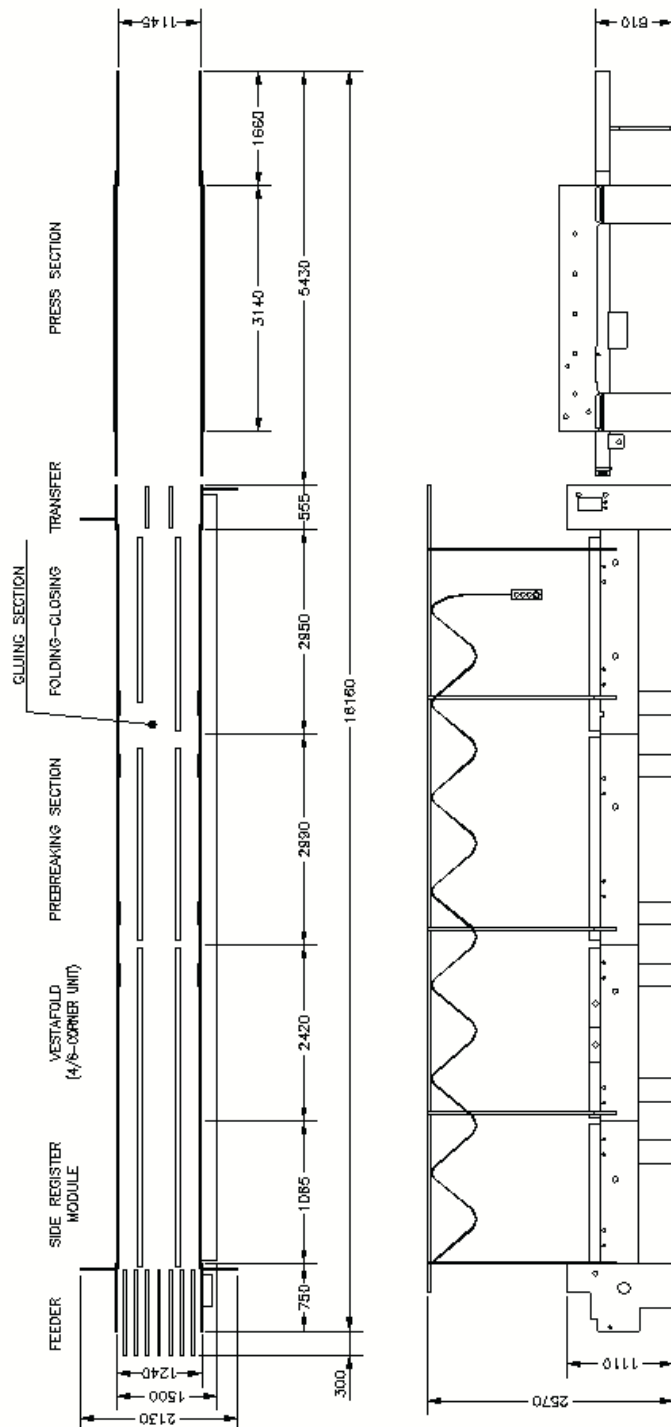


Lower glue (disc) unit

Vesta 1100 plus

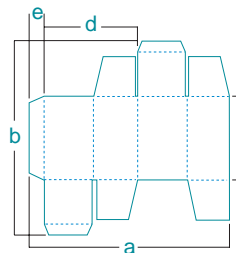
folder-gluer

OUTLINE



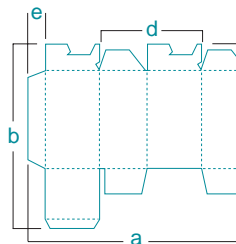
APPLICATIONS

*With special attachment for CD and small box



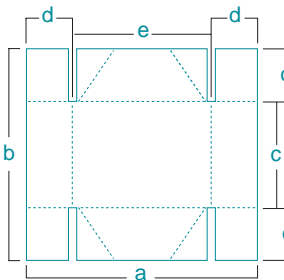
a 126–1100
a* 66–1100
b máx. 900
c mín. 60
d* mín. 30
e mín. 6

Cajas de fondo automático



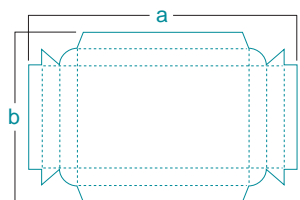
a máx. 1100
b máx. 900
c mín. 60
d mín. 90
e mín. 6
f mín. 30
f máx. 150

Cajas de 4 puntos



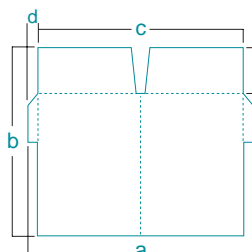
a 150–1100
b 150–1100
c mín. 100
d 25–150
e mín. 100

Cajas de doble pared



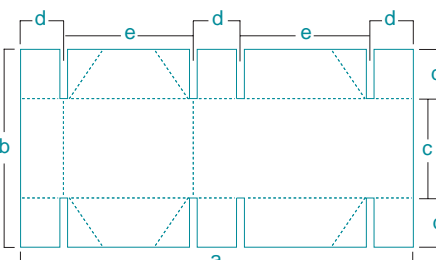
a máx. 1100
b máx. 1100
c mín. 60

Carpetas con bolsas interiores



a mín. 220
b máx. 800
c* mín. 100
d mín. 10
e máx. 300

Cajas de 6 puntos



a 275–1100
b 275–900
c mín. 100
d 25–150
e mín. 100

www.inramik.com