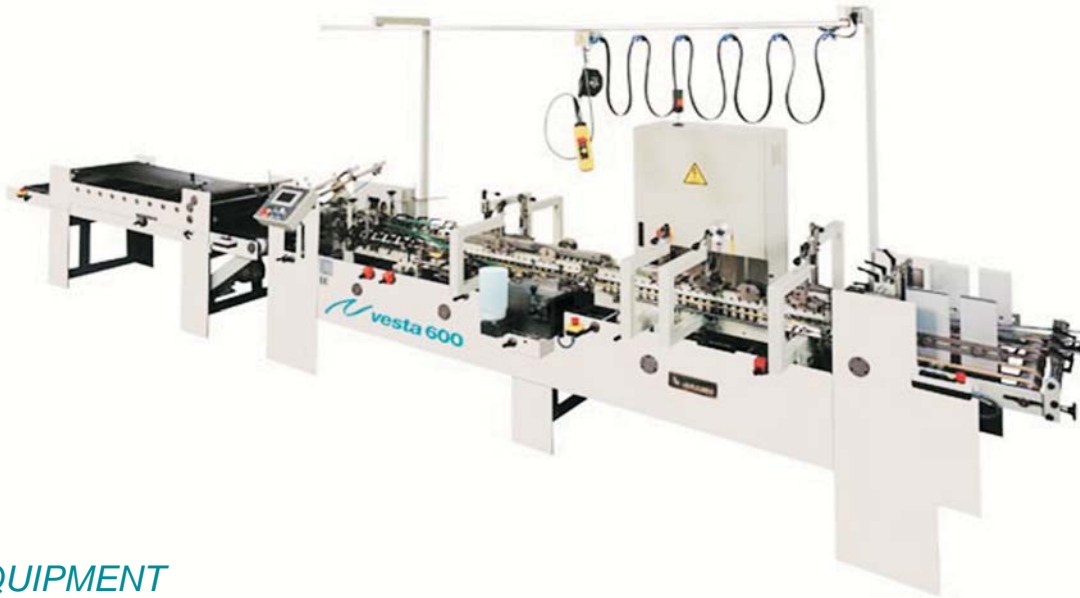


Vesta 600

folding carton gluer



EQUIPMENT

MATERIALS

- Compact carton up to 600 gr/m²
- E-, F- and N-microfluted carton

BLANK SIZES (standard boxes)

- Max. width 600 mm
- Min. width (standard machine) 96 mm
- Min. width (with small box attachment) 56 mm
- Max. length 500 mm

PRESS SECTION

- Pressure length of aprons 2.000 mm
- Aprons width 500 mm
- Max. thickness between aprons 100 mm

DRIVE

- Inching speed 25 m/min
- Variable running speed up to 300 m/min
- Press section speed up to 0-50 m/min
- Total power required (full equip) 10 kW
- Net weight, approx. 2.500 Kg
- Floor space required 1,6 x 7,9 m

STANDARD EQUIPMENT

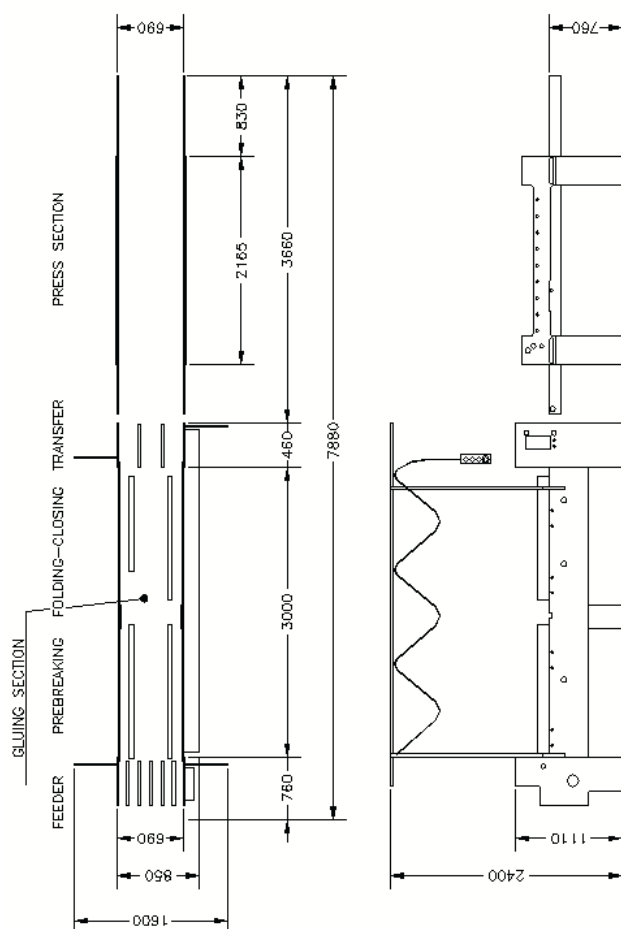
- Motorized feeder with independent, adjustable belts, AC speed variator and electronic pile vibrator.
- AC motors with assisted ventilation. They do not require maintenance.
- Extended prebreaking section for 1st and 3rd creases.
- Lower gluing (disc) unit in stainless steel.
- Upper carriers with tilting ends.
- Folding and closing section of 2nd and 4th creases.
- Digital carrier position indicators.
- Transfer section with two upper and two lower adjustable telescopic ejector arms.
- Touch screen counter. Language selection. Controlling production, speed and spacing between cartons.
- Pneumatic kicker (1.1 Kw air compressor required).
- Sliding overhead control unit.
- Motorized press with adjustable pressure and spacing control.

We reserve the right to modify specification

SOME OPTIONS

- Crashlock bottom type "A" and double wall unit.
- Attachment for crashlock bottom boxes type "B"
- Double upper glue (disc) system.
- Electronic glue systems for cold glue or hotmelt.
- Glue inspection and verification system.
- Pocket folder attachment.
- Small box attachment.
- Glue flap milling device (grinder) with dust extractor.
- Bar code readers with stopping relay or carton ejector.
- Attachment for standard boxes with inner partitions.
- **Vestapack**, carton collector module.

OUTLINE

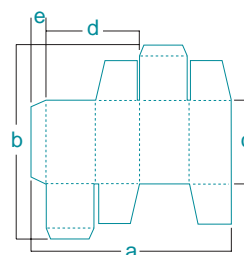


www.inramik.com

APPLICATIONS

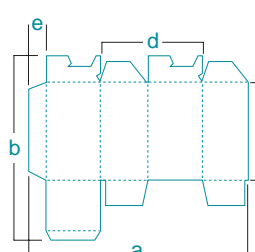
*With special attachment

Standard boxes



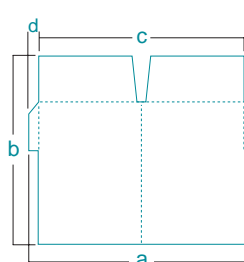
- a 96–600
- a* 56–600
- b máx. 500
- c mín. 40
- d mín. 25
- e mín. 6

Crashlock bottom boxes



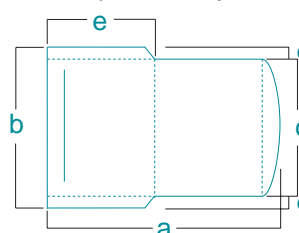
- a máx. 600
- b máx. 500
- c mín. 60
- d mín. 80
- e mín. 6

Pocket folders



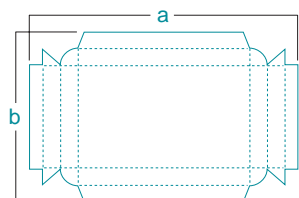
- a mín. 120
- b máx. 500
- c mín. 100
- d mín. 10
- e máx. 300

Envelopes and CD jackets



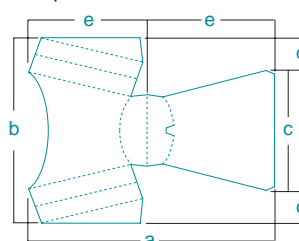
- a máx. 600
- b mín. 120
- c mín. 100
- d mín. 10
- e mín. 100

Double wall boxes



- a máx. 600
- b máx. 500
- c mín. 60

Tapered boxes



- a mín. 240
- b mín. 190
- c mín. 90
- d mín. 50
- e máx. 120