

Vesta 800 plus

folder-gluer



EQUIPMENT

MATERIALS

- Compact carton up to 600 gr/m²
- E-, F- and N-microfluted carton

BLANK SIZES (standard boxes)

- Max. width 800 mm
- Min. width (standard machine) 96 mm
- Min. width (with small box attachment) 56 mm
- Max. length 700 mm

PRESS SECTION

- Pressure length of aprons 2,420 mm
- Aprons width 680 mm
- Max. thickness between aprons 140 mm

DRIVE

- Inching speed 25 m/min
- Variable running speed up to 400 m/min
- Press section speed up to 0-50 m/min
- Total power required (full equip) 33 kW
- Net weight, approx. 5,100 Kg
- Floor space required
(with side register module and Vestafold) 1.8 x 14.5 m

STANDARD EQUIPMENT

- Motorized feeder with independent, adjustable belts, AC speed variator and electronic pile vibrator.
- AC motors with assisted ventilation. They do not require maintenance.
- Extended prebreaking section for 1st and 3rd creases.
- Lower gluing (disc) unit in stainless steel.
- Upper carriers with tilting ends.
- Folding and closing section of 2nd and 4th creases.
- Reducer gear box drive along the full machine length.
- Digital carrier position indicators.
- Adjustable crease pressing rollers.
- Transfer section with two upper and two lower adjustable telescopic ejector arms.
- 2 touch screen counters at feeder and delivery. Language selection. Controlling production, speed and spacing between cartons.
- Pneumatic kicker (1.1 Kw air compressor required).
- Sliding overhead control unit.
- Motorized press with adjustable pressure and spacing control.

Vesta 800 plus

folder-gluer

SOME OPTIONS

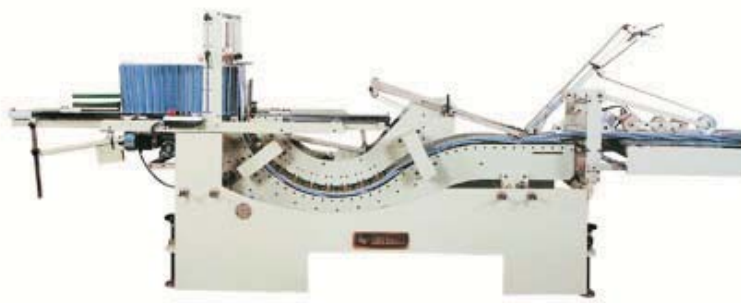
- Untimed suction feeder.
- Side register module.
- Crashlock bottom type "A" and double wall unit.
- Attachment for crashlock bottom boxes type "B".
- 3rd centre removable carrier on folding & closing section.
- **Vestafold** electronic 4-corner folding module with servo motors controlled by microprocessor.
- 6-corner accessories.
- Motorized transfer section.
- Electronic glue systems for cold glue or hotmelt.
- Glue inspection and verification system.
- Pocket folder attachment.
- Small box attachment.
- Glue flap milling device (grinder) with dust extractor.
- Bar code readers with stopping relay or carton ejector.
- Attachment for standard boxes with inner partitions.
- Pneumatic press.
- **Vestapack** carton collector module.



Suction feeder (option)



Side register module (option)



Vestapack carton collector (option)



Vestafold 4-corner folding module (option)



Pneumatic press (option)

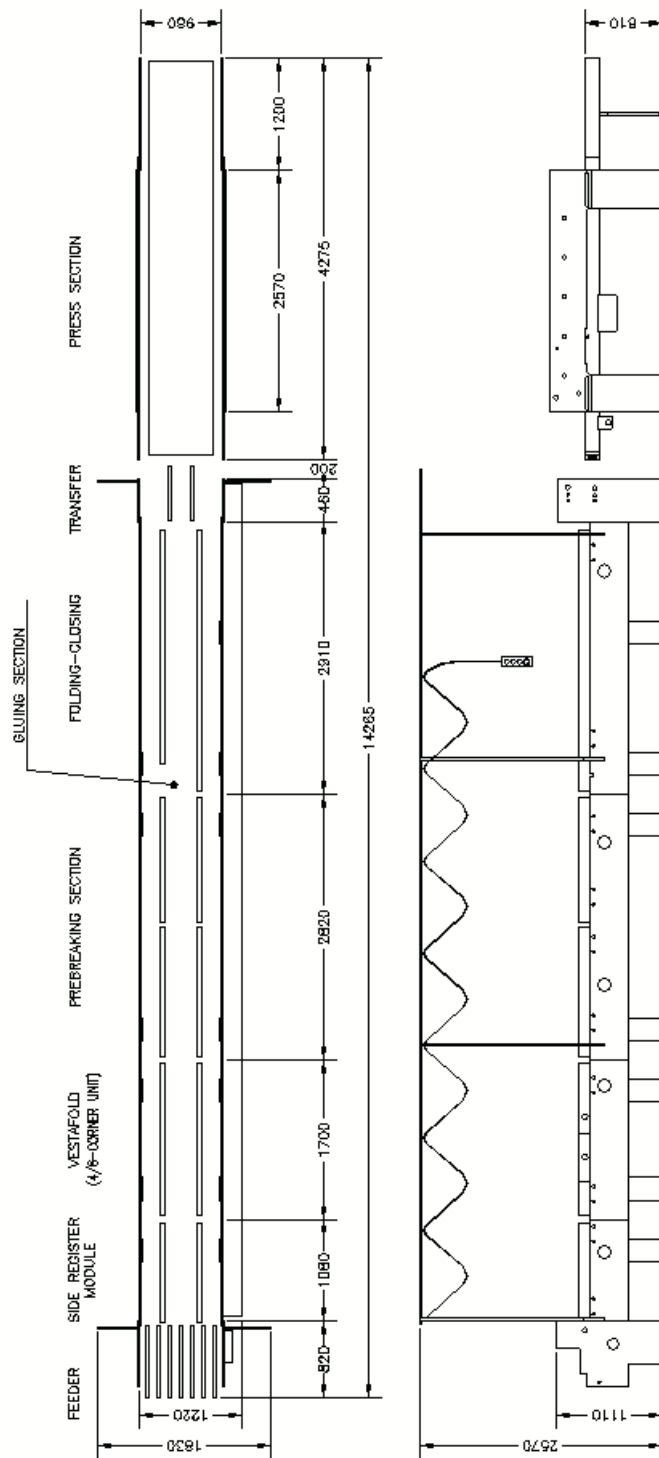


Lower glue (disc) unit

Vesta 800 plus

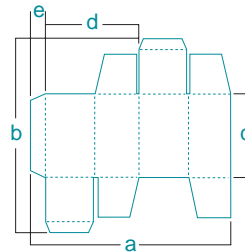
folder-gluer

OUTLINE



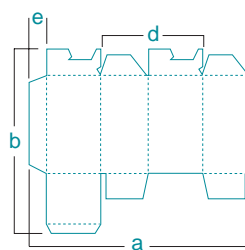
APPLICATIONS Measures in (mm) // *With special attachment

Standard boxes



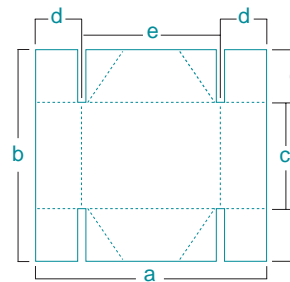
- a 96–800
- a* 56–800
- b máx. 700
- c mín. 50
- d* mín. 25
- e mín. 6

Crashlock bottom boxes



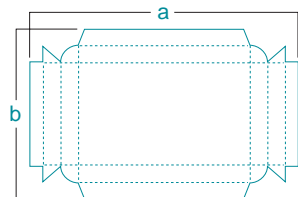
- a máx. 800
- b máx. 700
- c mín. 60
- d mín. 80
- e mín. 6

4-corner boxes



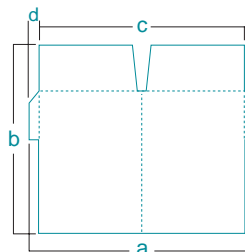
- a 150–800
- b 150–800
- c mín. 100
- d 25–150
- e mín. 100

Double wall boxes



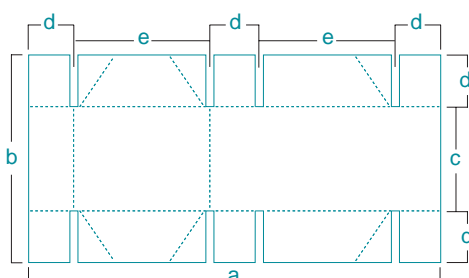
- a máx. 800
- b máx. 700
- c mín. 60

Pocket folders



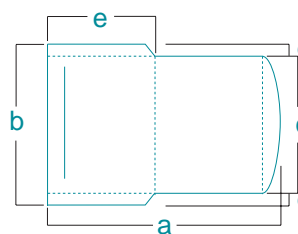
- a mín. 220
- b máx. 650
- c mín. 200
- d mín. 10
- e máx. 300

6-corner boxes



- a 275–800
- b 150–800
- c mín. 100
- d 25–150
- e mín. 100

CD envelopes



- a máx. 700
- b mín. 145
- c mín. 125
- d mín. 10
- e mín. 100