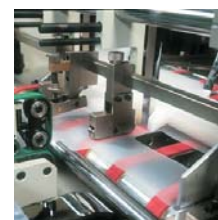


Vesta 800 Poly

*folder-gluer
for clear boxes*



feeder



EQUIPMENT

MATERIALS

- PVC & PET (from 200 to 500 microns)
- PP (from 300 to 800 microns)

BLANK SIZES (standard boxes)

- | | |
|------------------------------------------|--------|
| • Max. width | 800 mm |
| • Min. width (standard machine) | 96 mm |
| • Min. width (with small box attachment) | 56 mm |
| • Max. length | 700 mm |

PRESS SECTION

- | | |
|---------------------------------|----------|
| • Pressure length of aprons | 2,420 mm |
| • Aprons width | 680 mm |
| • Max. thickness between aprons | 140 mm |

DRIVE

- | | |
|-----------------------------------|--------------|
| • Inching speed | 20 m/min |
| • Variable running speed up to | 400 m/min |
| • Press section speed up to | 0-17 m/min |
| • Total power required | 30 kW |
| • Net weight, approx. | 4,500 Kg |
| • Floor space required, approx. | 1.8 x 11.5 m |
| • With Vestafold , approx. | 1.8 x 13.5 m |

STANDARD EQUIPMENT

- Motorized suction feeder with independent, adjustable belts, AC speed variator and stack vibrator.
- AC motors with assisted ventilation. They do not require maintenance.
- Extended prebreaking section for 1st and 3rd creases.
- Lower gluing (disc) unit in stainless steel.
- Upper carriers with tilting ends.
- Folding and closing section of 2nd and 4th creases.
- Reducer gear box drive along the full machine length.
- Digital carrier position indicators.
- Heating system on folding and closing section allows for glue reactivation.
- Adjustable crease pressing rollers.
- Transfer section with two upper and two lower adjustable telescopic ejector arms.
- 2 touch screen counters at feeder and delivery. Language selection. Controlling production, speed and spacing between cartons.
- Pneumatic kicker (1.1 Kw air compressor required).
- Sliding overhead control unit.
- Motorised press with adjustable pressure and spacing control.

Vesta 800 Poly

folder-gluer
for clear boxes

SOME OPTIONS

- Crashlock bottom type "A" and double wall unit.
- Attachment for crashlock bottom boxes type "B"
- 3rd centre removable carrier on folding & closing section.
- **Vestafold** electronic 4-corner folding module with servo motors controlled by microprocessor.
- 6-corner accessories.
- Glue inspection and verification system
- Pocket folder attachment.
- Small box attachment.
- Bar code readers with stopping relay or carton ejector.

NORDSON HOTMELT SYSTEM

The MC12 hot melt application system is specially dedicated to the PUR adhesives used to produce clear boxes. Its microprocessor-based control maintains the temperature within an accuracy of +/- 0.5 °C (1° F) of the set point.

It is equipped with a visual bar graph display, to allow fast and easy monitoring, and a seven day timer, to start the unit up and shut it down automatically. Its pressurized lid prevents the adhesive from premature curing.

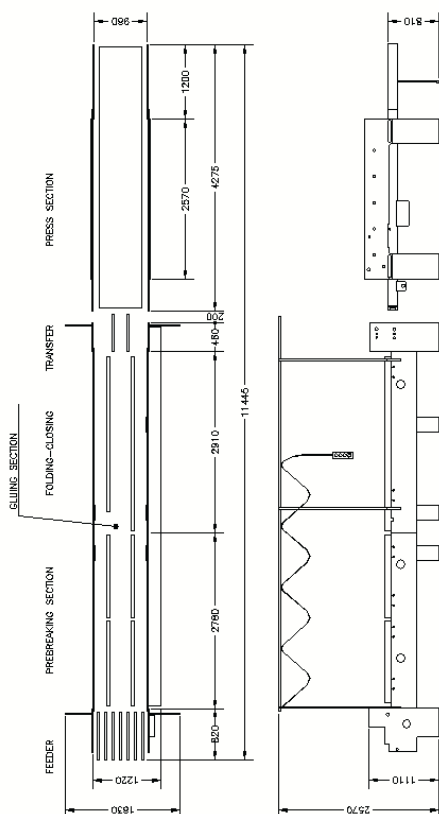
The adhesive patterns are programmed using the standard EPC30 controller, or the new LA4400 which includes a colour touch screen and multi language choices.

This system is provided by Nordson, the leading supplier of gluing equipment.

Nordson Corporation has direct operations in more than 30 countries, and a worldwide distribution network.

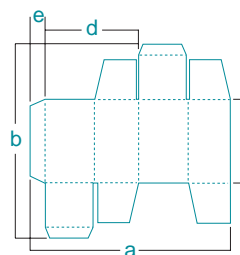


OUTLINE



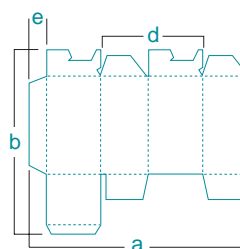
APPLICATIONS Measures in (mm) // *With special attachment

Standard boxes



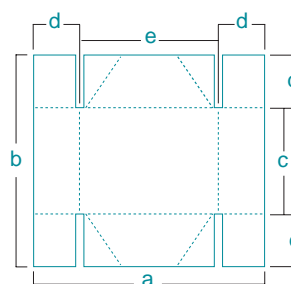
- a 96–800
- a* 56–800
- b máx. 700
- c mín. 50
- d* mín. 25
- e mín. 6

Crashlock bottom boxes



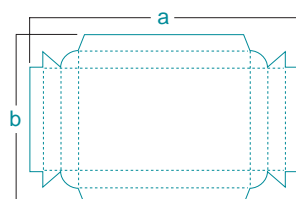
- a máx. 800
- b máx. 700
- c mín. 60
- d mín. 80
- e mín. 6

4 point boxes without lid



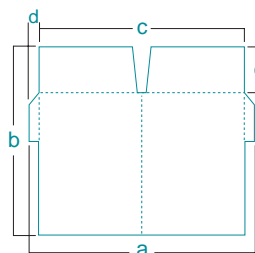
- a 150–800
- b 150–800
- c mín. 100
- d 25–150
- e mín. 100

Double wall boxes



- a máx. 800
- b máx. 700
- c mín. 60

Pocket folders



- a mín. 220
- b máx. 650
- c mín. 200
- d mín. 10
- e máx. 300